

Session J

Nonlinear Dynamics of Human Locomotion

Dan Goldman

Nick Gravish

Sarah Sharpe

Georgia Institute of Technology, Atlanta, GA, USA

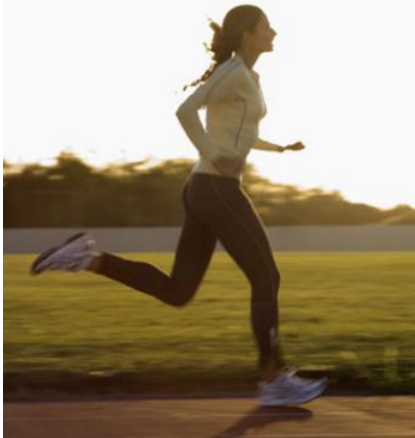
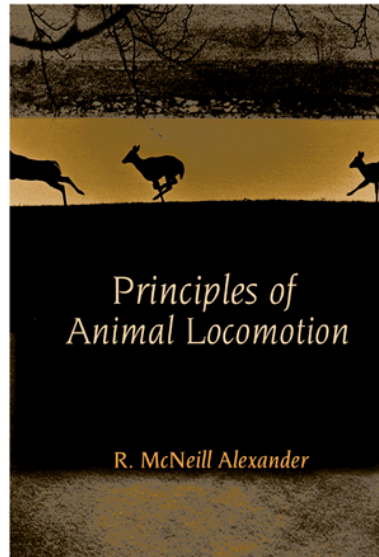
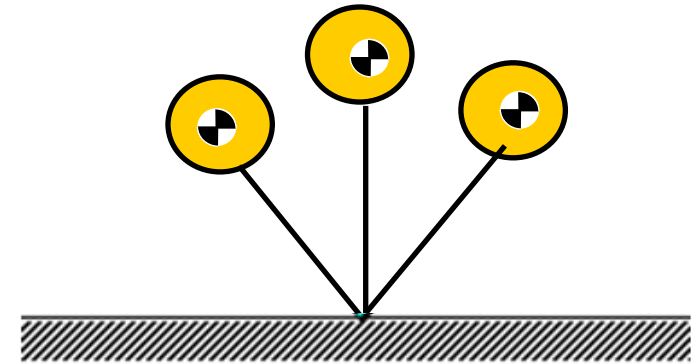
He Li

Shanghai Jiao Tong University, Shanghai, China

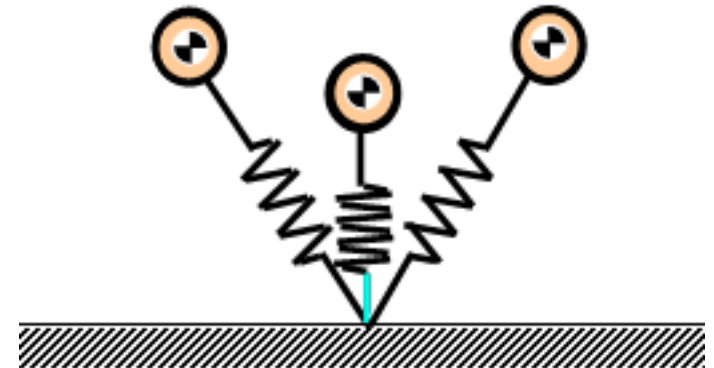
Classical models of terrestrial locomotion



walking: inverted pendulum

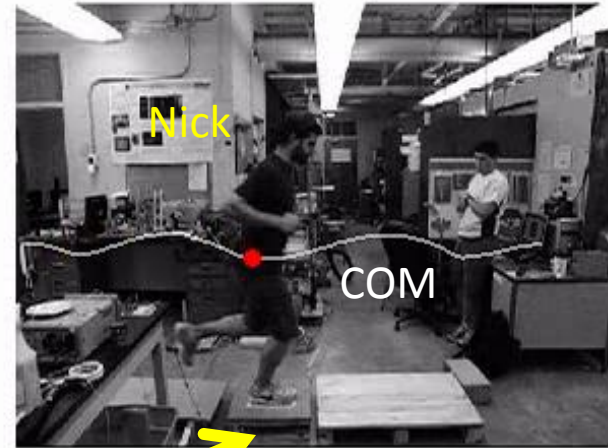


running: spring-loaded inverted pendulum

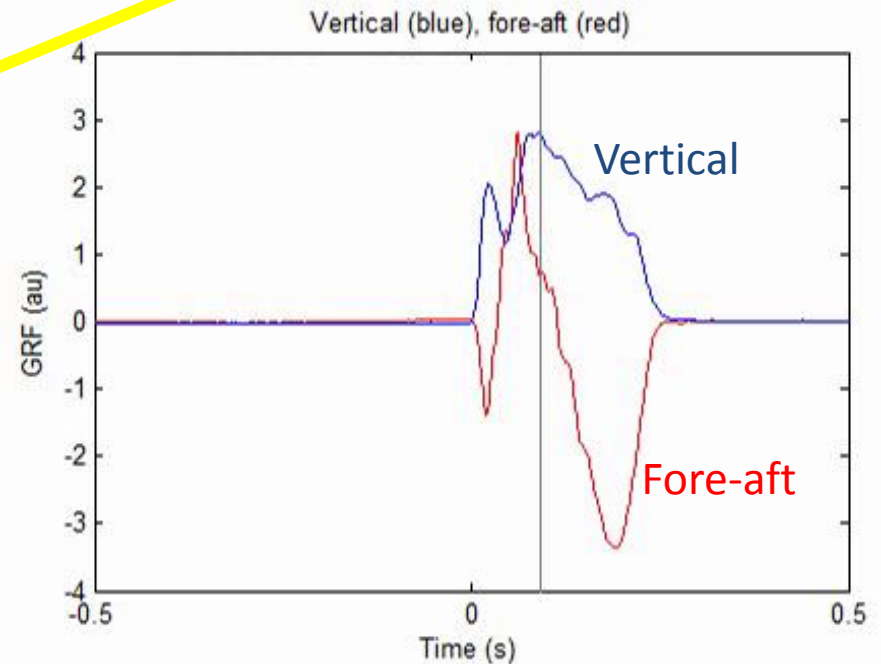
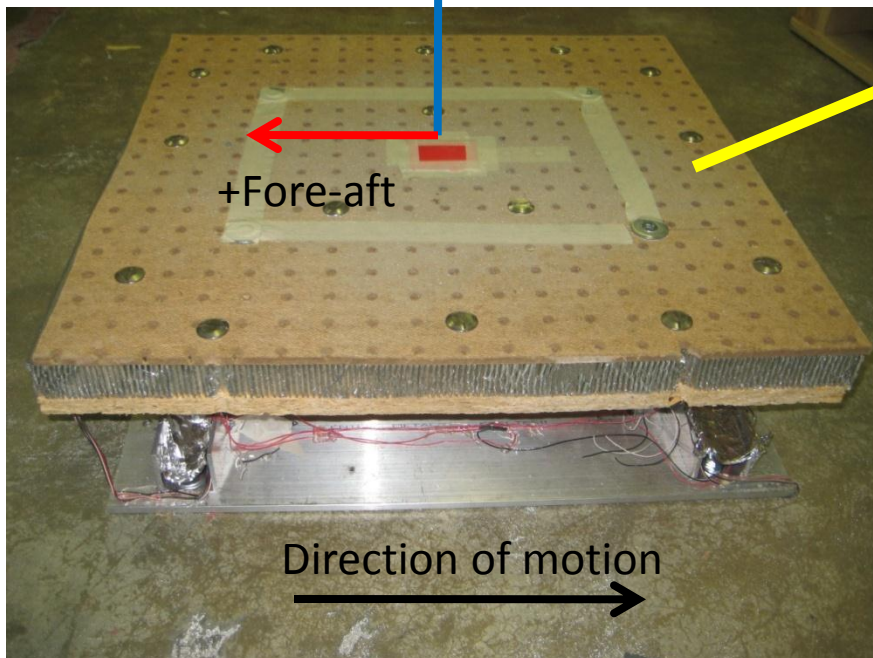


Hands-on session: Kinematics & Dynamics measurements

High speed camera (200 fps)



2 axis force platform (measures GRF)



Important

Please wear
clothes & shoes in
which you can
walk and *jog*